



Into Action

PEOPLE AT WORK



Find this tomb model in gallery 19, case 25. You will see lots of people working. Find as many different jobs as you can that people are doing.

Jobs I can see being done	How do you think this job would be done now?



Into Action

GODS AND GODDESSES

The ancient Egyptians worshipped many gods and goddesses, who were often linked to animals.

Find these animals in case I I and then match them to the gods.

cow
ram
cat
jackal
ibis

Bastet
Thoth
Amun or Khnum
Hathor
Anubis

Look at the other gods in this case.

Choose your favourite and draw it below.



Into Action

NORTH TO SOUTH AND BACK



Find these model boats. They were found in an ancient Egyptian tomb.

Boats were very important in ancient Egypt. They used them on the river Nile for many journeys and to carry cargo.

If you were ancient Egyptian, why would you put a model of your boat in your tomb?.....

Each model boat is powered differently. One boat is powered by
The other is powered by

The Nile runs through Egypt flowing from south to north, but the wind usually blows from north to south. Draw the boat that would have been used for a journey from north to south on the Nile.

Who is steering the boat?

Mark them with an X.

How are they steering the boat?

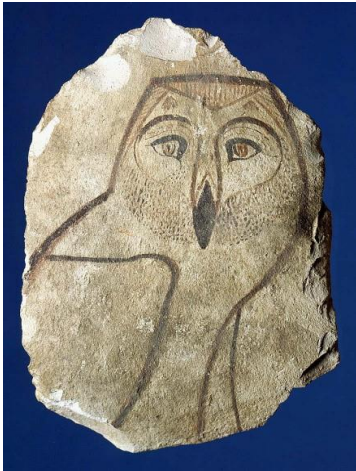
.....
.....





Into Action

LEARNING TO SCRIBE



Find this object in case 15.

In ancient Egypt, not everyone learned how to read and write. People who could read and write were called scribes.

It took five years to train to be a scribe at a special school. This owl was made by a trainee scribe.

In this case there is a pen box. Find it and draw it here.

Find the pens that would have been inside it.

What are they made from?

.....

Now look at the yellow and blue coffins in the middle of this gallery.

They were owned and used by a man called Nespawersheft. His job was to manage lots of different scribes.

Compare the writing (hieroglyphs) on Nespawersheft's coffins to the examples made by trainee scribes. How skilled do you think the scribes were who made the coffins?

Beginner!

1

2

3

4

Expert!

5

Look carefully at the pictures on the coffin. Choose one detail and draw it here.



Into Action

NOT TO BE MISSED

Some visitors to The Fitzwilliam Museum's ancient Egyptian gallery cannot spend much time looking around because there are so many other things to see in the Museum.

Your task is to choose five things they **must** see in the ancient Egyptian Gallery before they leave.

The objects you choose should give visitors an idea about what life was like in ancient Egypt and how people lived. Say why you chose each object.

Name of the Object	Why I chose it
1	1
2	2
3	3
4	4
5	5



Into Action

PACKING FOR THE LONGEST JOURNEY

The ancient Egyptians believed that when they died they went on a journey to the afterlife. When they reached the afterlife, they believed they would need all the objects they used in their life on earth. Objects of every sort were put in the tomb near the body.

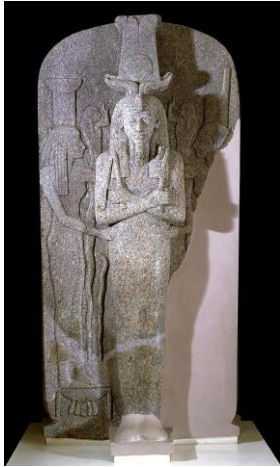
Imagine you are an ancient Egyptian. Decide what you would like to take on your journey to the afterlife. You can choose anything in the ancient Egyptian galleries.

Something I would choose	Why I would choose this
To help me in my work	
For my home in the next life	
That was special to me in my life on earth	
To give thanks to the gods in the afterlife	
To wear in the afterlife	
To eat and drink	



Into Action

PHAROAHS AND KINGS



This is a sarcophagus lid. A sarcophagus is a stone coffin. It is made from one whole piece of granite.

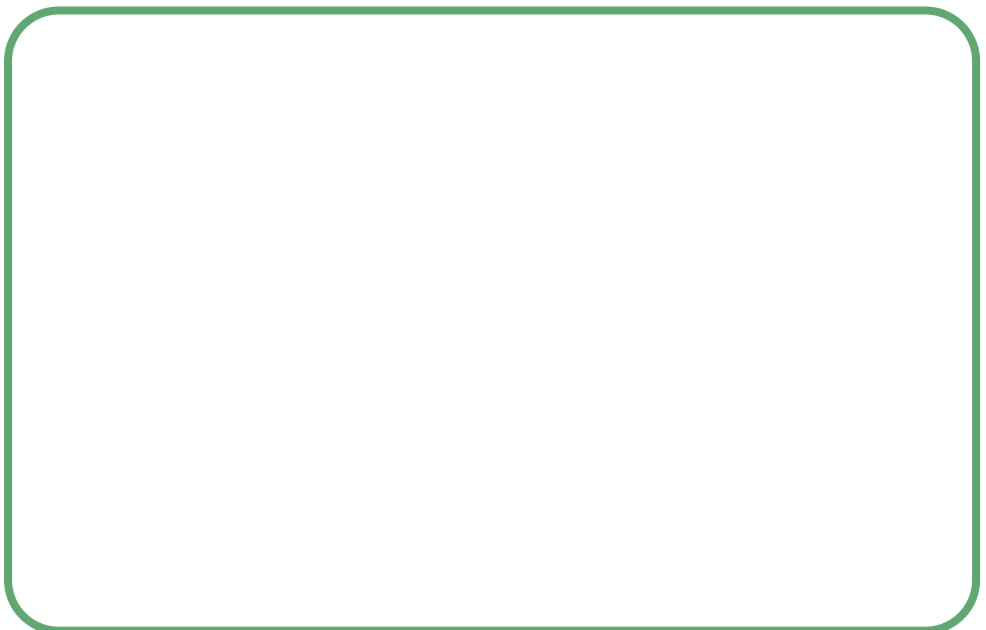
- It is over 3 metres high
- It weighs 7 tons
- It was made for the King Ramesses III, who ruled over ancient Egypt over 3000 years ago.

Four of the statements below show this object was made for a king. Tick the four you think they are.

- He is wearing a crown of ostrich feathers, sun disk and horns.
- He is wearing a uraeus – a cobra on his forehead.
- It is made from granite.
- It was broken in a special ceremony.
- The whole object is the shape of a cartouche, in which was written the name of a king.
- He is holding a crook and a flail in crossed hands.
- He is wearing a wig.

There are other images of kings and queens in this gallery.

Find one and draw it here.





Into Action

NOW AND THEN

Can you find the Ancient Egyptian versions of these modern objects?
What's similar and what are the differences between the old and the new versions?



Make up pots



An axe



A mirror



Into Action

THE INTERVIEW

Choose an ancient Egyptian portrait or sculpture to interview. You may only ask 10 questions, so think carefully about what you want to know. Try to work out the answers by looking closely at the painting, and also by using your imagination.

I chose.....

- 1.
- 2.
- 3.
- 4.
- 5.
- 6.
- 7.
- 8.
- 9.
- 10.



Into Action

STRIKE A POSE

Look around the galleries – can you see any statues or carvings of people?

Try out some of their poses. Who do you think is the most confident? Who is feeling thoughtful?

Are any figures holding anything or doing anything? What does this tell you about them?

What is special about them? Where do you think they might have been? Draw one of the statues in a scene.



Ancient Egyptian statues and carvings would often have been painted bright colours. The paint has all worn away now. When you get back to school you could colour your statue in.